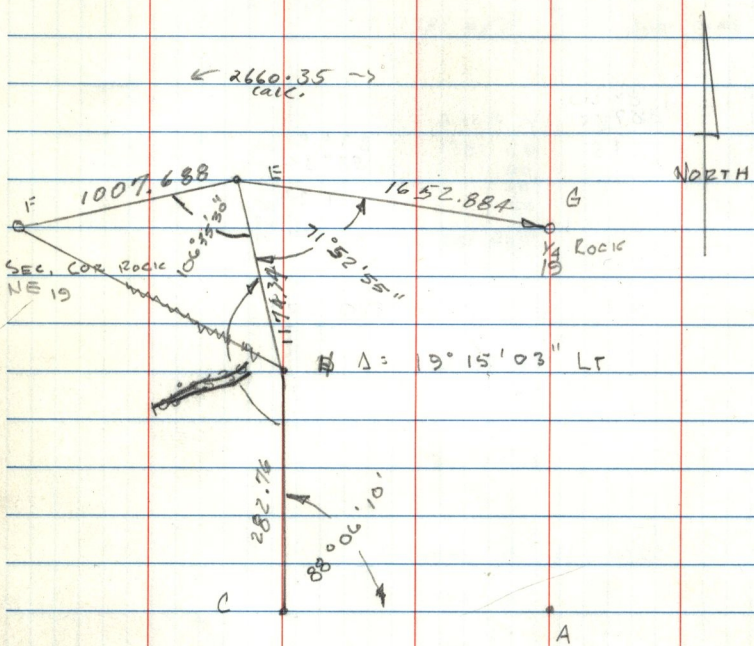


(37)

E 1/2 of N. Line of S. 22. 19, T. 7N., R. 1E



C TO D VL = 0° 19'	D TO E VL = 0° 39'	E TO F VL = 10° 06'
282.77	1174.39	1023.55
16		.56
77	39	.55
76	41	.56
<u>282.760</u>	<u>1174.34</u>	<u>1007.688</u>

E TO G VL = 0° 58'
1653.08
05
08
09
<u>1652.844</u>